

CHOOSE A CITY

NEWS

PORTRAITS



The Abbey at Sunset

LOS ANGELES

HOME / [LOS ANGELES](#)

L. RAPHAEL SPA AT MONTAGE HOTEL COOL SPOTS, HIGHLIGHTS



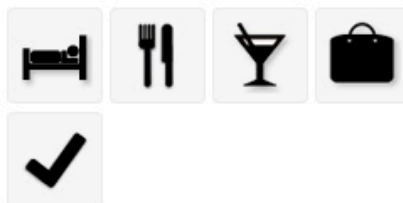
HUCKLEBERRY BAKERY & CAFÉ RESTAURANTS & CAFÉS



CAFÉ HABANA RESTAURANTS & CAFÉS



SEARCH BY CATEGORY



SEARCH BY NEIGHBOURHOOD

COOL FLIGHTS in the front seats



L. RAPHAEL SPA AT MONTAGE HOTEL



PHOTOS

MAPS

LOS ANGELES

[HOME](#) / [LOS ANGELES](#) / [COOL SPOTS, HIGHLIGHTS](#) / [L. RAPHAEL SPA AT MONTAGE HOTEL](#)

SEARCH BY CATEGORY



SEARCH BY NEIGHBOURHOOD

The best in Swiss cosmetic science meets SoCal hacienda vibes in Beverly Hills. The spa at the Montage expands across more than 21,500 sq. ft., making it a veritable temple of relaxation. With Turkish baths, multiple treatment rooms, and a fireside lounge, there is ample space to indulge and be pampered by the attentive staff. A first on the West Coast: Treatments using the exclusive line from the Geneva-based company L. Raphael are available.

L. RAPHAEL SPA AT MONTAGE HOTEL

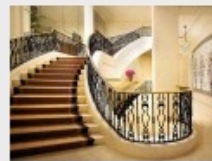


PHOTOS

MAPS

LOS ANGELES

HOME / LOS ANGELES / COOL SPOTS, HIGHLIGHTS / [L. RAPHAEL SPA AT MONTAGE HOTEL](#)



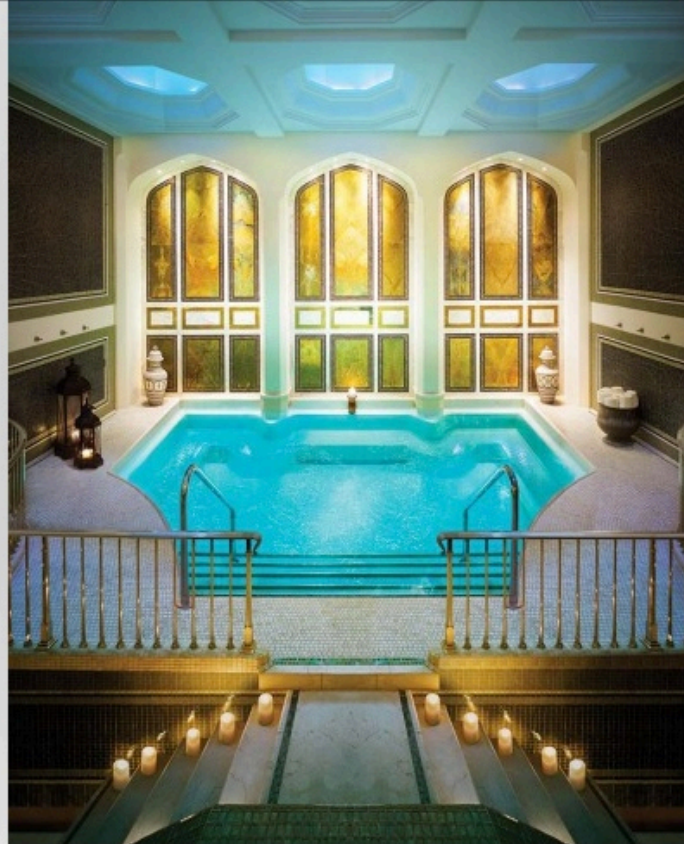
SEARCH BY CATEGORY



SEARCH BY NEIGHBOURHOOD

The best in Swiss cosmetic science meets SoCal hacienda vibes in Beverly Hills. The spa at the Montage expands across more than 21,500 sq. ft., making it a veritable temple of relaxation. With Turkish baths, multiple treatment rooms, and a fireside lounge, there is ample space to indulge and be pampered by the attentive staff. A first on the West Coast: Treatments using the exclusive line from the Geneva-based company L. Raphael are available.

L. RAPHAEL SPA AT MONTAGE HOTEL



PHOTOS

MAPS

LOS ANGELES

[HOME](#) / [LOS ANGELES](#) / [COOL SPOTS, HIGHLIGHTS](#) / [L. RAPHAEL SPA AT MONTAGE HOTEL](#)

SEARCH BY CATEGORY



SEARCH BY NEIGHBOURHOOD

The best in Swiss cosmetic science meets SoCal hacienda vibes in Beverly Hills. The spa at the Montage expands across more than 21,500 sq. ft., making it a veritable temple of relaxation. With Turkish baths, multiple treatment rooms, and a fireside lounge, there is ample space to indulge and be pampered by the attentive staff. A first on the West Coast: Treatments using the exclusive line from the Geneva-based company L. Raphael are available.